

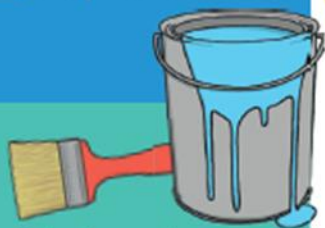
Year 6

Vocabulary, Grammar and Punctuation Terminology

Passive

When a sentence is in the passive voice, the verb is being done to the subject rather than the subject doing the verb.

- The window has been broken.
- The playground was painted (by the PTA).



Active

When a sentence is in the active voice, the pattern is subject-verb-object. The **subject** of the verb is more important.

- James broke the window.
- The PTA painted the playground.

Synonym

A synonym is a word or phrase with the same or similar meaning to another. You can find synonyms in a **thesaurus**.

- talk = speak = mention
- sleep = doze = kip

Antonym

Antonyms are words with opposite meanings.

- young – old
- straight – bendy
- full – empty



Subject

The subject is the person, noun phrase, pronoun or thing which does the verb in a clause.

- Wednesday is my favourite day.
- Cheryl's mum is picking me up today.
- Are you coming to the sleepover?

Object

The object is the person, noun phrase, pronoun or thing which usually comes directly after the verb. It shows what the verb is acting on.

- Wednesday is my favourite day.
- Cheryl's mum is picking me up today.
- Are you coming to the sleepover?